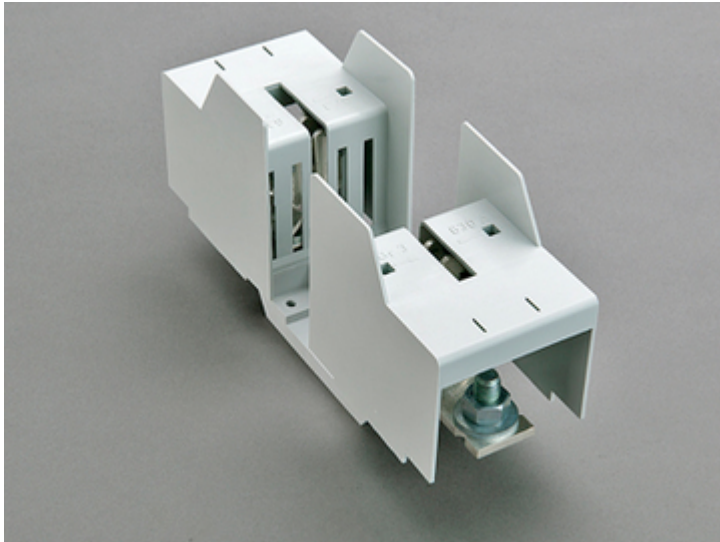


## NH.fuse-base 630 A, panel mounting (03 768)



### Description

#### Article

Part No.: 03 768

QUADRON<sup>®</sup> Panel

NH.fuse-base 630 A, panel mounting

both sides screw M12

size 3 / 1P, with touch protection

#### System

Mounting plate

Product group 10

Subgroup 12

pack size 3

EAN 4021267037680

#### Advantages of the product

For safe connection of the leads, the shock protection is split into 2.

Catalog page 2015 : 6/13

eCl@ss 6.1 27142106  
eCl@ss 7.1 27142106  
ETIM 4.0 EC000067  
ETIM 5.0 EC000067

## Approvals

### Standards

IEC 60269-1:2006 + A1:2009 + A2:2014  
IEC 60269-2:2013

### Approvals

Germanischer Lloyd



## Product data

### Electrical data

Rated current (IEC): 630 A  
Rated voltage (IEC) AC: 690 V  
Rated voltage (IEC) DC: 440 V

Power dissipation:

The power dissipation at a typical load of 80% of the rated current results to 19.2 W.  
(The power dissipation for operation with rated current would be 30 W.)

rated isolation voltage  $U_i$  (AC): 800 V  
Rated surge voltage  $U_{imp}$ : 6 kV  
max. permitted voltage (IEC) AC: 1000 V  
max. permitted voltage (IEC) DC: 1000 V

breaking capacity with fuses: 50 kA

for fuse links IEC 60269-2 / DIN VDE 0636-201 size 3 up to 60W power dissipation

### **Mechanical data**

W x H x D: 80 x 247 x 134

Weight: 110.8 kg/100

Poles: 1-pole

Connection screw (aluminium terminal can be retrofitted):  
screw connection M12, 28 - 32Nm torque,  
aluminium connection 2 x M10, cross-section 95 - 240mm<sup>2</sup>,  
Cu - Al, 16 - 20Nm torque

### **Terminal points**

NHUT\_SCHRAUBE\_M12

### **Material properties**

Main body: temperature stability 125°C,  
self-extinguishing in acc. to UL 94,  
creepage resistance CTI 600,  
halogen-free

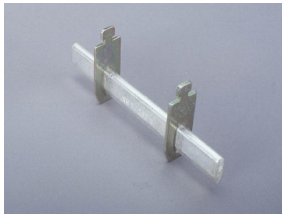
Contacts: spring-loaded copper contacts, silver plated

Connecting screw M12, galvanized, chromized

screws:

Shock protection cover: temperature stability 125°C,  
self-extinguishing in acc. to UL 94,  
creepage resistance CTI 200,  
halogen-free

## Accessories



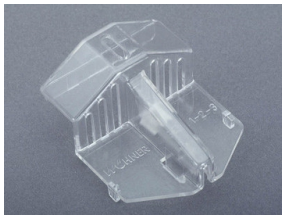
**03 164**  
knife link 630 A  
size 3



**03 502**  
NH fuse extractor handle  
open  
size 000 - 3



**03 757**  
neutral conductor 400 A, disconnectable  
screw on both sides  
200 mm long



**79 449**  
grip lug cover  
for NH fuse base  
NH 1 - 3